

## State of Wyoming Corner Record

(In compliance with the CORNER PERPETUATION AND FILING ACT, Wyoming Statutes, 1997, Section 33-29-140, et. seq. and the Rules and Regulations of the Board of Registration for Professional Engineers and Professional Land Surveyors)

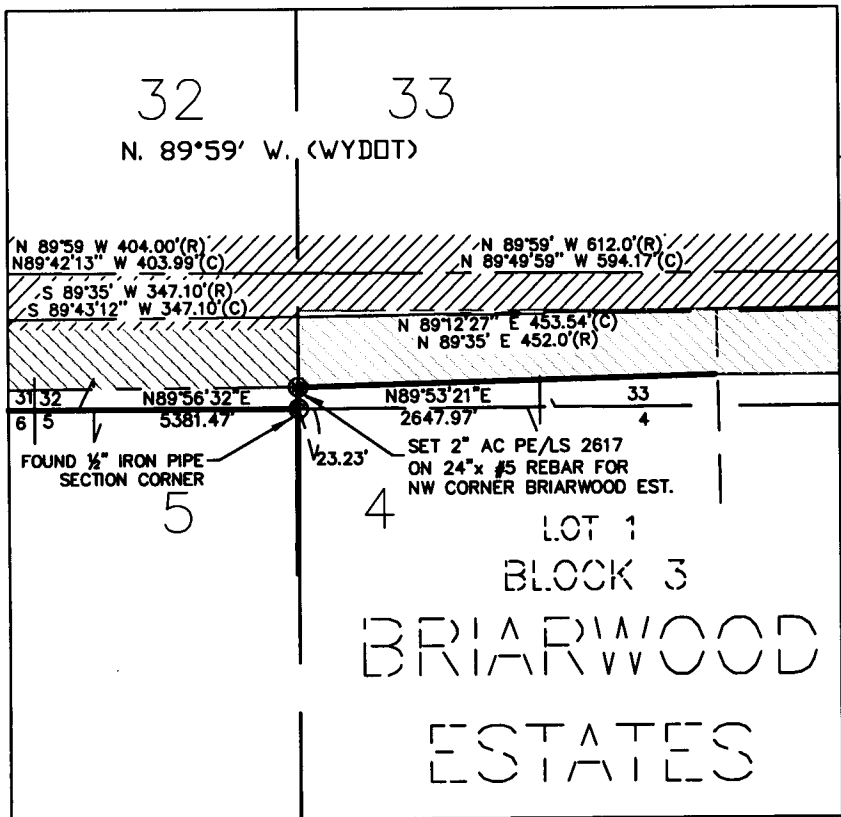
Reverse side of this form may be used if more space is needed.

Record of original survey and citation of source of historical information (if corner is lost or obliterated). Description of corner monumentation evidence found and/or monument and accessories established to perpetuate the location of this corner. Sketch of relative location of monument, accessories, and reference points with course and distance to adjacent corner(s) (if determined in this survey). Method and rationale for reestablishment of lost or obliterated corner.

**FOUND:** 1/2" Iron Pipe on 12/98, As Described On Briarwood Estates Plat.

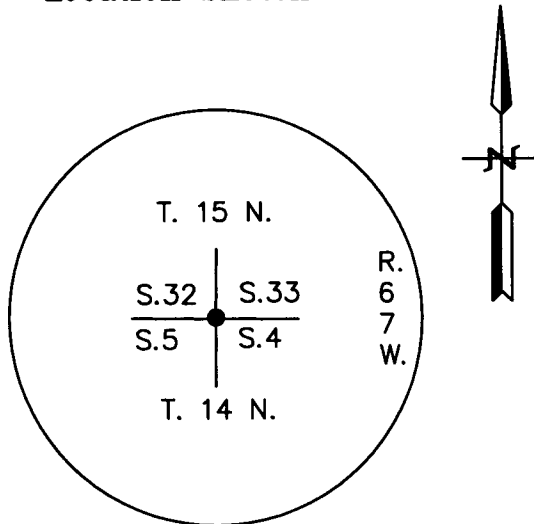
**RECORD:** As Described On Briarwood Estates Plat.

**SET:** NW corner Briarwood Estates, position was established or re-established during a pre-construction boundary survey completed 6/99 for WYDOT under Job No. CMU-1100(15) & CMW-211(5) with a Project Scale Fator of 1.000360959, using a pre-determined coordinated system provided by WYDOT to determine coordinate postions. Map of Survey recorded 6/99.



**Monument location**

**Location Sketch**

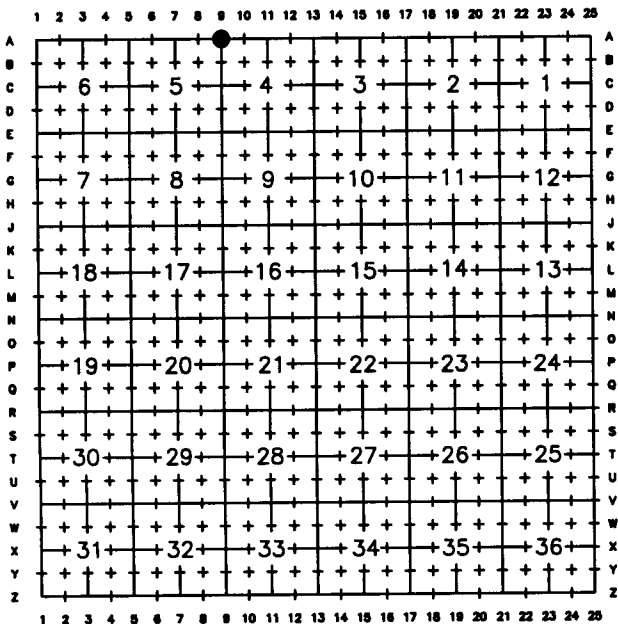


**Monument Inscription**

Date of Field Work: 5-04

Office Reference: 2-2475.03

### Cross Index Plat



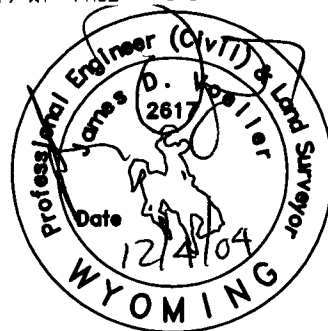
Firm/Agency, Address

James D. Voeller  
A.V.I., p.c.  
2035 Westland Road  
Cheyenne, WY 82001  
 Telephone Number: (307) 637-6017

This corner record was prepared by me or under my direction and supervision.

SEAL & SIGNATURE

RECORDED 12/08/2004 AT 2:05 PM REC# 404484 JK# 1852 PG# 1695  
 DEBRA K. LATHROP, CLERK OF LARAMIE COUNTY, WY PAGE 1 OF 1



Corner Name: SECTION CORNER Section: 32|33 15N  
5|4 T14N R67W; 6th P.M. Cross-Index No.: A-9

SBRPEPLS/PLSW: March 1994; PLSW January 1998  
 County: Laramie Wyoming